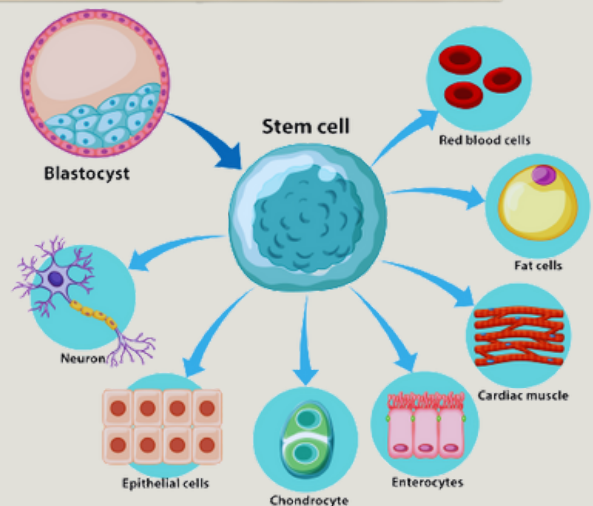


NUVITALIFE MCELL



WHAT ARE STEM CELLS?

Stem cells are cells with the potential to develop into many different types of cells in the body. They serve as a repair system for the body. They provide new cells for the body as it grows and replace specialized cells that are damaged or lost. Currently in medicine, stem cells are already used particularly in transplant medicine to treat leukemia and severe burns.



DIFFERENCE BETWEEN PLANT STEM CELL AND HUMAN CELL

Unlike human stem cells,

Adult plants contain totipotent stem cells that have the potential to differentiate into all other tissues of the plant or even regenerate the entire plant.

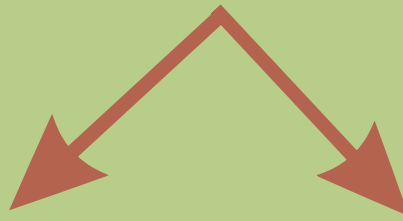
Eg. by cutting the branch of a tree also results in a new bud/branch growth.

The ability to regenerate a whole new plant by using a single tissue makes it currently one of the most pioneering and exciting ingredients in food supplement.

HOW DO PLANT STEM CELLS HELP ?

1. Human stem cells on the skin's epidermis replenish and maintain the balance of cells within the skin tissue and regenerate tissue damages during injury.
2. But with age, the number of skin stem cells decreases and their ability to repair the skin becomes less efficient.
3. Once they begin depleting, the signs of aging start kicking in (in the forms of loose skin and wrinkles)
4. With the help of plant stem cells, it help to diminish the sign of aging, boosts production of human stem cells and protect the cell from stress.

KEY INGREDIENT OF NUVITALIFE MCELL



PhytoCellTec Malus™ Domestica **(APPLE STEM CELL)**

1. Patented liposomal preparation of apple stem cells derived from the 'Uttwiler Spätlaube', Swiss apple variety.
2. Uttwiler Spätlauber apples have especially long-living tissue stem cells, very famous for its excellent storability without shriveling.
3. These apple stem cells are rich in epigenetic factors and metabolites, which ensures the longevity of skin cells.

PhytoCellTec™ Solar Vitis **(GRAPE STEM CELL)**

1. Derived from the grape (vitis vinifera) cultivar 'Gamay Teinturier Fréaux' originates from the Burgundy region of France.
2. Characterized by its red flesh and juice due to the extremely high anthocyanin content.
3. Contain anti-inflammatory and antioxidant properties.
4. Used as food supplements for reducing the oxidative stress-induced detrimental effects on human health,

OTHER INGREDIENTS OF NUVITALIFE M-CELL.

Astaxanthin

Sea Buckthorn Extract

Ascorbic Acid

Olive Oil Extract

Melon Juice Concentrate

Camu Camu Extract

Acai Berry Extract

Mixed Berries Powder
(Raspberry, Blueberry, Blackberry)

ASTAXANTHIN:



- Natural astaxanthin from the microalgae, Haematococcus pluvialis
- Prevents free radical attacks and oxidative stress that damages the skin
- Revitalizes photoaged skin by quenching oxidative stress and inflammation in
- all skin layers
- Fight skin dryness and skin roughness

CAMU CAMU EXTRACT:



- It is rich in vitamin C, a vitamin that acts as a powerful antioxidant in your body and
- is vital for the health of your skin and immune system.
- Helps to fight inflammation.
- Promotes good sugar level & blood pressure

ASCORBIC ACID:

- Promote production of collagen
- Strong anti-oxidant properties
- Promote vitality of skin cell

SEABUCKTHORN EXTRACT:



- High ORAC value.
- May enhance skin regenerating and repairing .
- Help in promote collagen cross-linking .

ACAI BERRY EXTRACT:



- Slowing down the signs of aging
- Reduces the appearance of fine lines
- Rich in anthocyanin and polyphenols hence boosting the immune system
- Helps to lower blood cholesterol levels

MELON JUICE CONCENTRATION:



- An ingredient rich in SOD
- Promotes general well-being by reducing stress level
- Maintaining optimal mental and physical performance

OLIVE OIL EXTRACT:



- 100% natural process with high level of natural hydroxytyrosol which helps to improve cardiovascular health
- Helps to prevent undesirable effects of free radicals and chronic inflammatory consequences
- Protects skin from free radicals occurring within the body, thus reducing the aging effect of skin

MIXED BERRIES POWDER:



- High in antioxidant anthocyanins which are compound of flavonoids that is proven to prevent aging of the skin.
- Boost overall cognitive function.
- Strong antioxidant, able to combat against free radical damage, which is the main cause of cancer.
- The antioxidant activity of berries include the protection of LDL against oxidation Berries are high in fiber.
- Help keep your arteries healthy.

HOW DO STEM CELLS HELP OUR SKIN..?

1)Protection Against UV Radiation:

The stem cells were stressed through irradiation with UV light.

Almost 50% of the cells that were cultured in the growth medium alone died, whereas cells cultured in presence of an extract of Uttwiler Spätlauber experienced only a small loss of viability.

2)Protection Against Human Stem Cell:

At only 0.1%, the extract stimulated cell proliferation by 80%.

Results showed that Malus Domestica stem cell extract has a positive effect on stem cell growth thus maintaining the growth and the proliferative activity of stem cells.

3)Retardation of Senescence in Isolated Hair Follicles:

Addition of 0.2 % of this extract was found to slightly but clearly postpone senescence and necrosis follicles kept in presence of the Malus Domestica stem cell extract continued to elongate until day 18, whereas the control follicles started to shrink after day 14.

4)Anti-Wrinkle Effect on the Crow's Feet Area:

PhytoCellTec™ Malus Domestica cream was found to significantly reduce wrinkle depth after two and after four weeks, by 8% and 15% respectively.

5)Protection Against Human Epidermal Stem Cell:

Old cells were completely unable to form the 3D epidermal structure.

However old cells that had been maintained in the presence of the apple stem cell extract exhibited no loss of function, and were able to establish a perfectly normal 3D epidermal structure even at this advanced age.